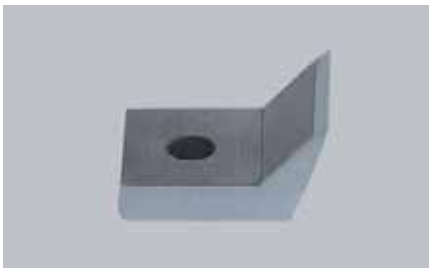


GSL 300

Beside the Press Granulator

- Direct driven staggered rotor
- Special knife design makes adjustment unnecessary
- Easy access for maintenance and cleaning
- Slow rotor speed creates less noise and dust
- Easily customizable to suit different applications



The curvature of the specially profiled rotor knives ensures a constant cutting radius after re-sharpening thus maintaining the original cutting gap. Awkward knife adjustment is no longer necessary.

Staggered rotor blades creates an individual blade cut thus increasing the cutting torque. All of the machines in this series are therefore suitable for grinding more solid materials and thicker walled sprues.

Due to the Quick snap fasteners used on the GSL series machines, the machines can be opened for cleaning and maintenance quickly without the need for special tools.

General Description

The slow speed granulators in the GSL 300 range feature a staggered 300 mm diameter rotor with widths ranging from 400 to 800 mm. The rotor is directly driven by a geared motor. The low rotor speed reduces the noise level of the machine and creates less dust while grinding. The special design knives of the GSL series can be sharpened easily and do not need adjustment afterwards. The material is fed via a sound absorbing feed hopper that can be tailored to fit various applications and feeding ways. Depending on the requirements the machines can be fitted with a wide variety of hoppers, they are mounted on either low or high level base frames with matching suction bins or bag filling adapters. Quick snap fasteners and hand screws make access to the machine for cleaning and maintenance fast and easy.

Applications

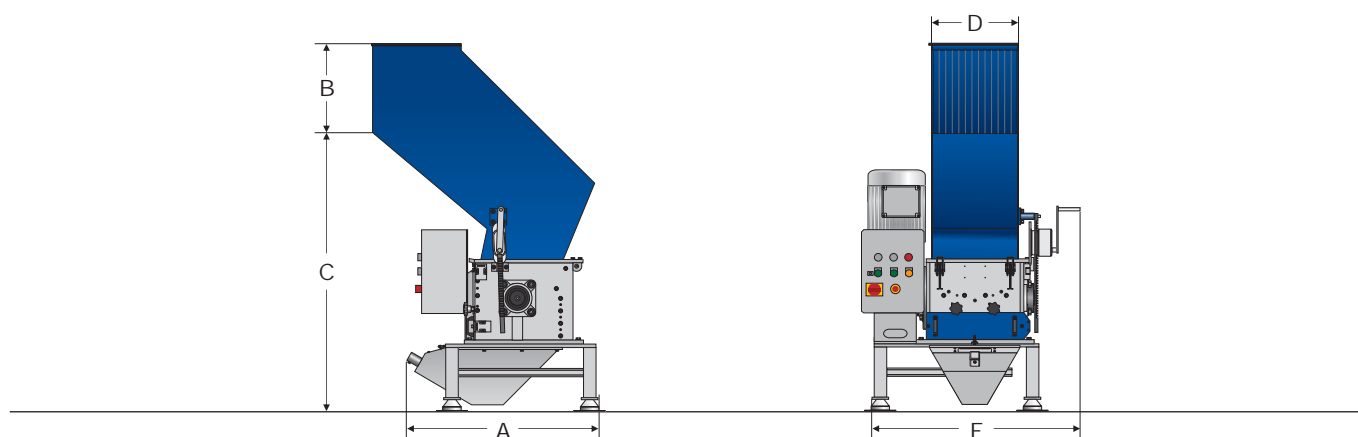
The GSL slow speed granulators of the 300 series are mainly used in injection and blow molding processes as beside the press machines to grind runners and sprues. But they can be used as low noise central granulators for small throughput requirements as well. The stronger design of the 300 series GSLs allow them to be used for stronger and thicker materials while offering the same advantages regarding low noise and dust as the smaller GSL machines. All GSL models can be equipped with a built in blower system in case a vacuum loading system is not available, or to transport the ground material to bags for storage.



The Home of Size Reduction

GSL 300

Beside the Press Granulator



Technical Specifications and Dimensions

Model

Rotor diameter (mm)
Rotor width (mm)
Rotor speed (rpm)
Drive capacity (kW)
Rotor knives (pcs)
Stator blades (rows)
Screen size (mm)
Weight approx (kg)

300/400

300
400
150
7.5
33
2
>5
550

300/600

300
600
150
11
48
2
>5
950

300/800

300
800
150
18.5
66
2
>5
1100

A (mm)
B (mm)
C (mm)
D (mm)
E (mm)

950
400
1335
405
1035

1125
400
1335
600
1230

820
400
1340
830
1635

ZERMA MACHINERY & RECYCLING TECHNOLOGY CO. LTD.

5 Xinjie Rd Xinqiao Township Ind. Park

Songjiang · Shanghai · China

Phone : +86 21 57645573 · info@zerma.com

Technical modifications reserved / ver1.7 - 08.2015 / en

zerma.com

